

PRINCETON
JOURNEYS

EXPLORING ALASKA'S COASTAL WILDERNESS

8 DAYS / 7 NIGHTS | AUGUST 12-19, 2023



AN EXPEDITION ABOARD NATIONAL GEOGRAPHIC VENTURE



DEAR PRINCETONIAN,

Alaska, once known as Seward's Folly and little valued, now tops the lists of travelers who seek genuine wildness. Discover the authenticity of this region of unparalleled experiences and unrivaled wilderness. Lindblad Expeditions' years of experience is your key to enjoying the most in-depth and engaging encounters. They know the protected coves where sea otters congregate, the river rapids where bears fish for salmon, and the rich channels where whales feed. You'll hear the thunderous crack of a calving glacier dropping ice hundreds of feet into the sea, hike the spongy trails of old-growth forests, and watch eagles fly low over quiet inlets.

Aboard the 50-cabin *National Geographic Venture*, you'll discover Alaska's wildness in a way only a few do. This nimble, shallow-draft expedition ship allows us to access secluded areas larger vessels simply cannot reach. Enjoy a complete suite of exploration tools—Zodiacs, kayaks, and stand-up paddleboards—to enable you to get out there for up-close personal discoveries. A hydrophone and underwater video camera will make your whale-watching experiences even more memorable. The culinary team on board will help you to experience Alaska with all of your senses, with much of the food sourced locally from sustainable providers, and with flavors that reflect the area's wild bounty.

The expedition team is unrivaled in its knowledge of and experience in Alaska, and will ensure that you see, do, and learn more than you ever imagined possible. Share the adventure with an experienced team of Naturalists who will not only accompany you on Zodiac cruises and hikes through forests, but will also introduce you to Alaska's surprising and colorful life under the sea. And a certified photo instructor is at your side and at your service to help you take your best photos ever.

I hope you can join this incredible adventure. **Contact the Princeton Journeys team at (609) 258-8686 or journeys@princeton.edu to reserve your space today.**

With kind regards,



Bridget St. Clair
Director, Education and Travel
Princeton University

Cover: Exploration in Alaska by Zodiacs provides a unique, water-level perspective. © Justin Hoffman. Opposite page (clockwise): Totem Pole; guests in kayak, watching brown bear from a safe distance; Petersburg, Mitkof Island, Tongass National Forest, Alaska; young guests kayak near icebergs in Endicott Arm.

Ship's registry: United States



EXPERIENCE ALASKA EXPEDITION STYLE



Guests explore icebergs up close.

Drawing on many years of experience exploring Alaska and a network of knowledgeable insiders, our voyage will connect you to the region in a way you never thought possible. A perfectly sized ship takes you deeper inside where you'll discover authentic Alaska—the majestic bears, breaching humpbacks, old-growth forests, calving glaciers, inaccessible vistas, and true Alaska towns. Along the way, veteran Naturalists will illuminate every facet of your expedition, providing expert commentary and spotting wildlife so you don't miss a thing. And not being tied to port times means we have the flexibility to stop and linger should we happen upon a pod of humpback or killer whales—giving you a front-row seat to the powerful, often unexpected, moments only nature can provide.

THE RICHEST WILDLIFE-WATCHING EXPERIENCE

National Geographic Venture's experienced captain and expedition staff know where to find iconic wildlife. Their knowledge and connections with area locals, such as the Alaska Whale Foundation, means we have insider tracking of whale whereabouts—creating amazing observation and photo ops. Schedules permitting, researchers from the Alaska Whale Foundation come aboard to share their knowledge and latest findings, and to provide insight into humpback behavior. The Naturalists may also drop a hydrophone to reveal whale communication. You can even observe the wild ocean below, as the undersea specialist dives to shoot video of the otherworldly creatures or deploys the Remotely Operated Vehicle (ROV), which you'll see on TV screens from the comfort of the lounge.



Breaching humpback.

Opposite page (clockwise from top): Brown bear; Steller sea lions; breaching humpback whale; seldom-seen undersea, including this lion's mane jellyfish; bald eagle fishing.



PERFECT PLATFORM TO DISCOVER WILD ALASKA



National Geographic Venture.

Travel in comfort aboard a new 50-cabin expedition ship carrying 100 guests. The *National Geographic Venture* is purpose built for exploring regions like remote Southeast Alaska. A nimble design allows you to sail into spectacular winding fjords and shallow, fast-moving channels where whales feed. Share the thrill of spotting

diving humpbacks or bears foraging along the shore from the expansive bow—and use onboard tools for deeper exploration. A fleet of Zodiacs ensures quick access from on board to shores untouched by tourist infrastructure. Single and tandem kayaks and stand-up paddleboards let you paddle in quiet coves.

ACTIVELY EXPLORE EVERY DAY IN MANY WAYS

Every day brings new adventure and an array of active options. Start your morning with a stretch on the sundeck with the wellness instructor, hike or walk through the lush towering forest, with time for your Naturalists to share the unique wonders of the native flora. Later on, observe a calving glacier by Zodiac, try your hand at stand-up paddleboarding, visit a typical Alaska town, or kayak along wildlife-rich shorelines keeping watch for swooping bald eagles and gregarious sea lions.

When you prefer, stay aboard to read or enjoy a wellness treatment in the spa. There's never one-size-fits-all scheduling here; choose your activities at whatever level and staff members to join daily.



Alaska's protected waters are perfect for kayaking.

Opposite page (clockwise from top): Hiking a forest trail; guests take advantage of Alaska's unrivaled photo ops; enjoy a Zodiac cruise amidst electric blue icebergs; kayakers encounter a bear on shore; take in the epic scenery from a new vantage—on a stand-up paddleboard.



SHARE YOUR EXPEDITION WITH THE BEST TEAM



Close encounter with sea lions.

Learn, see, and do more by exploring with experts who know the region best. Share the adventure with a team of Naturalists, an undersea specialist, a certified photo instructor, an expedition leader, and a video chronicler. Since personal attention is important, you explore with one staff member for every ten guests, the best

Naturalists to guest ratio in Alaska. And you're able to gravitate towards individuals whose interests mirror your own—photography, the undersea, whales, botany, or something different daily. Benefit from a variety of expertise, perfectly sized groups on hikes, diverse perspectives, and engaging personalities.

CERTIFIED PHOTO INSTRUCTOR, AT YOUR SIDE & AT YOUR SERVICE

A certified photo instructor travels with you throughout your voyage. They are on board and in the field to assist with your camera settings, the basics of composition, and much more. Not only is the instructor an excellent photographer, more importantly, They are also a Naturalist who can teach you how to observe and understand wildlife behavior so you aim at just the right time and place for a great shot. Now everyone, at every skill level, can go home with shots they're proud to share.



Guest aims camera for the perfect shot.

Opposite page (clockwise from top): Photo instructor points out wildlife; a pod of killer whales; take time for individual exploration via kayak; a naturalist measures bear tracks on the forest floor; young guests observe a glacier up close.

EXPLORING ALASKA'S COASTAL WILDERNESS

8 DAYS/7 NIGHTS—ABOARD NATIONAL GEOGRAPHIC VENTURE



Guests walking through Sitka National Historic Park coastal trail.

Experience the remarkable beauty of Southeast Alaska on a voyage aboard a 50-cabin expedition ship into a land of mist-shrouded fjords, tidewater glaciers, and islands teeming with wildlife. Search for wildlife, kayak amid glacial ice, spend a full day exploring Glacier Bay National Park and learn about Alaska's rich Tlingit heritage.

DAY 1: JUNEAU, ALASKA/EMBARK

Arrive in Juneau and explore the Alaska State Museum, with its sprawling collection of natural history and cultural artifacts and explore the downtown. Settle into your cabin before dinner. (D)

DAY 2: TRACY ARM-FORD'S TERROR WILDERNESS

Voyage into Tracy or Endicott Arm, both are spectacular fjords with waterfalls cascading from glacially carved walls. Watch and hear the calving of Dawes or South Sawyer Glacier up close and take a cruise in a Zodiac for an unbeatable view of sculpted icebergs. Keep an eye out for harbor seals, harbor porpoises and arctic terns. (B,L,D)

DAY 3: PETERSBURG

Search for humpback whales as we head to the small, true Alaskan town of Petersburg. Explore a unique Southeast Alaskan ecosystem, the "muskeg," with stunted trees and carnivorous plants. Stretch your legs with a bike ride around town, or an optional flightseeing excursion before enjoying a crab feast this evening. (B,L,D)

DAY 4: FREDERICK SOUND AND CHATHAM STRAIT

With luck, see whales breaching, tail-slapping, or feeding. Later, hike or kayak for up-close exploration of the spectacular bays and inlets, following bear trails and salmon streams. (B,L,D)

DAY 5: THE INIAN ISLANDS AND ICY STRAIT

Explore among the Inian Islands, where an abundance of Steller sea lions and sea otters reside. Search for marine mammals in the rich waters of Icy Strait and choose the perfect spot around Chichagof Island to hike and kayak. (B,L,D)

DAY 6: GLACIER BAY NATIONAL PARK

By special permit, see massive glaciers that end abruptly at the water's edge. Wilderness abounds —mountain goats roam the cliffs and brown bears patrol the shore; Steller sea lions live in the icy waters. A native Tlingit cultural interpreter joins us to share stories of the area. (B,L,D)



DAY 7: SOUTHEAST ALASKA'S ISLANDS, BAYS, AND FJORDS

Today, nature is your guide. You may explore an isolated beach to take a closer look at tide pools, beach-comb, hike stunning forest trails, or see bear tracks worn into the soil while walking in an isolated meadow. Sightings of bald eagles are very common. If conditions permit, you can do some kayaking, always watching for marine and terrestrial life. (B,L,D)

DAY 8: SITKA/DISEMBARK

Disembark in Sitka, Southeast Alaska's only oceanfront town, and visit the Sitka National Historic Park, where towering Sitka spruce and Western hemlock trees shelter majestic Tlingit and Haida Totem poles. Transfer to the airport for flights home. (B)

Please note: All day-by-day descriptions are a sampling of the places we intend to visit, conditions permitting. Your expedition leader and captain will share your handcrafted itinerary once on board.

EXPLORE TONGASS NATIONAL FOREST

A Forest Service Special Use Permit for Tongass National Forest enables us to hike and kayak in wild and remote areas of Southeast Alaska.

Bald eagle.





NATIONAL GEOGRAPHIC VENTURE

CAPACITY: 50 outside cabins accommodating 100 guests.
REGISTRY: United States. **OVERALL LENGTH:** 238 feet.

Designed with over 50 years of expedition heritage and built in the U.S.A, *National Geographic Venture* sets a new standard in expedition comfort and style.

PUBLIC AREAS: Global gallery; fitness center; LEXspa; lounge with full service bar and facilities for films and presentations; observation deck; mudroom with lockers for expedition gear, and a partially covered sundeck with chairs and tables. The open Bridge provides guests an opportunity to meet the officers and captain and learn about navigation.

MEALS: Served in single seatings with unassigned tables for an informal atmosphere. Cuisine is fresh, sustainable, accented with regional flair and are served plated.

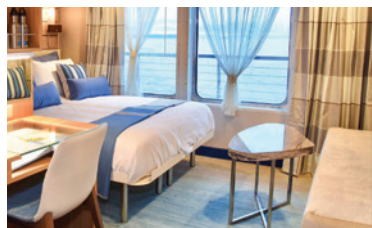
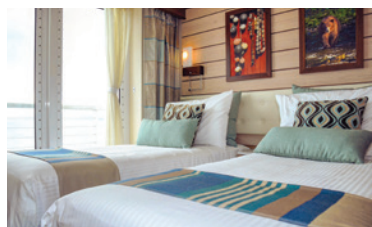
CABINS: All cabins face outside with windows or portholes, private facilities, and climate controls. Category 4 cabins have step-out balconies.

EXPEDITION EQUIPMENT: A fleet of 8 Zodiacs and 24 kayaks, paddleboards, Remotely Operated Vehicle (ROV), hydrophone, splash-cam, underwater video camera, and video microscope.

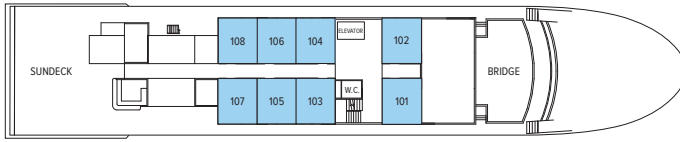
SPECIAL FEATURES: Guest Wi-Fi access, elevator, certified photo instructor, undersea specialist, video chronicler.

WELLNESS: The vessel is staffed by a wellness specialist and features a gym with an elliptical machine, treadmill, exercycle, handweights, and resistance bands. Treatments in the LEXspa are available by appointment.

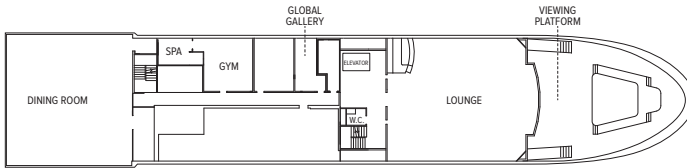
SUSTAINABILITY: Lindblad Expeditions takes responsible, sustainable travel to heart. For 50+ years, our expeditions have inspired travelers to protect the ocean, conserve wildlife, bolster local communities, and enable meaningful scientific research. We are 100% carbon neutral and dedicated to green business practices at every level of our operations. When you travel with us, you'll eat sustainable meals, experience our commitment to single-use plastic free travel, and be aboard the industry's first self-disinfecting expedition ships, prioritizing your health and safety. Feel good about exploring with us and preserve the planet for future generations.



Above: Category 4 cabin with single beds (which can be converted to a Queen) and a private balcony; dining room with expansive windows; Category 5 cabin.



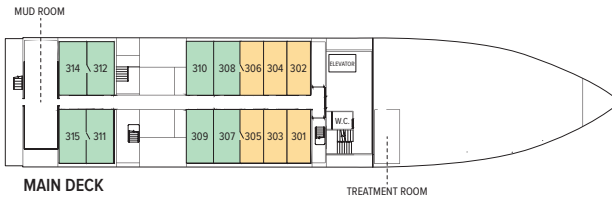
OBSERVATION DECK



LOUNGE DECK



UPPER DECK



MAIN DECK

CATEGORY 1: Main Deck #301-306

Cabins feature two lower single beds that can convert to a Queen, a writing desk, and two portholes.

CATEGORY 2: Main Deck #307-315

Cabins feature two lower single beds that can convert to a Queen, a writing desk, and two portholes.

CATEGORY 3: Upper Deck #201-206 Cabins feature two lower single beds that can convert to a Queen, a writing desk, and two large view windows.

CATEGORY 4: Upper Deck #207-229 Cabins feature two lower single beds that can convert to a Queen, a writing desk, sliding glass door, and small, private balcony.

CATEGORY 5 (SUITE): Observation Deck #101-108

Cabins feature two lower single beds that can convert to a Queen, large view windows, an expanded bathroom, writing desk, ample storage space, and a convertible sofa bed to accommodate a third person.

NOTE: Solo Occupancy cabins are available in Categories 1 and 2 only. Third person rates are available in Category 5 cabins at one half the double occupancy rate.

Connecting Cabins via internal doorway access: Main Deck: #312-314, #311-315, #306-308, #305-307; Upper Deck: #224-226, #225-227

Prices are per person, double occupancy unless indicated as solo.

VOYAGE DATES	CAT. 1	CAT. 2	CAT. 3	CAT. 4	CAT. 5 SUITE	CAT. 1 SOLO	CAT. 2 SOLO	ADVANCE PAYMENT	AIRFARES
August 12-19, 2023	\$7,560	\$8,390	\$8,880	\$9,870	\$10,920	\$11,340	\$12,500	\$750	Lindblad Expeditions can assist in making your air arrangements.

INCLUSIVE PRICING

ABOARD SHIP

- ✓ All meals served in the dining room
- ✓ All nonalcoholic beverages including unlimited cappuccinos, lattes, coffee, tea and soda
- ✓ Hors d'oeuvres and snacks during evening Recap
- ✓ Environmentally friendly refillable water bottle
- ✓ Regionally-specific, professionally-curated library
- ✓ Mac computers for downloading your camera's memory card
- ✓ Fitness center
- ✓ The guidance and company of our expedition staff
- ✓ Access to the Bridge to learn about navigation
- ✓ Spa treatments available (at additional cost)

ASHORE

- ✓ Special access permits, park fees, port taxes
- ✓ Transfers to and from group flights
- ✓ The expertise of our expedition staff

ACTIVITIES

- ✓ All shore activities (except optional flightseeing)
- ✓ Zodiac explorations
- ✓ Kayaking and stand-up paddleboarding
- ✓ Lectures and presentations in the lounge, including special presentations from the Alaska Whale Foundation and a Tlingit cultural interpreter
- ✓ Photo instruction
- ✓ Morning stretch classes with wellness specialist

SPECIAL OFFER

BRING THE KIDS: Sharing an expedition with your kids or grandkids is a life-enhancing experience. Take \$500 off the double occupancy price for each person under 18.

TERMS AND CONDITIONS

VOYAGE COST INCLUDES: All accommodations aboard ship; all meals and nonalcoholic beverages aboard ship; shore excursions, sightseeing, and entrance fees; use of kayaks and paddleboards; special access permits; transfers to and from group flights; tips (except to ship's crew), taxes, and service charges; services of our expedition staff. Unused services or items included in this program are non-refundable.

NOT INCLUDED: Air transportation; flightseeing; REAL ID, passport, visa or immigration fees; meals not indicated; travel protection plan; items of a personal nature such as: alcoholic beverages, Wi-Fi access, voyage chronicle, and laundry. Gratuities to ship's crew are at your discretion.

OFFER COMBINABILITY: Guests can apply two offers, at most, but with limited availability. All offers are valid for new bookings only, subject to availability, not applicable on pre or post-voyage extensions, and may not be combinable with other offers.

AIRFARE: Airfare is an additional cost. Lindblad Expeditions will assist in making your air arrangements for a \$50 per person service fee.

RESERVATIONS: To confirm your place, an advance payment of US\$750 per person is payable by check, Visa, MasterCard, American Express, or Discover.

FINAL PAYMENT: Due 90 days prior to departure.

TRAVEL INSURANCE: As a service to its travelers, Princeton Journeys automatically provides its travelers coverage under a group medical and evacuation insurance policy. It is highly recommended that you supplement this basic protection with your own additional coverage. Information on additional insurance is available and will be mailed upon receipt of your reservation.

ENTRY AND VISA REQUIREMENTS: Guests are advised to verify travel documents (passport/transit visa/entry visa) for the country through which they are transiting and/or entering. Reliable and most current information regarding international travel can be found by contacting the consulate/embassy of the country(s) you are visiting or transiting through. We will not be responsible if you are denied entry or transit into a country if you are unable to provide valid documents as per the country's requirement.

SMOKING AND VAPING POLICY: Allowed only in designated outdoor areas.

RESPONSIBILITY AND OTHER TERMS & CONDITIONS: Certain other provisions concerning, among other things, limitations of Lindblad Expeditions' and National Geographic Expeditions' (a division of National Geographic Partners, LLC) liability for loss of property, injury, illness, or death during the voyage will be provided to all guests on the ship's ticket sent prior to departure or upon request. By registering for a trip, the guest agrees to all such terms and conditions.

NOTE: Itinerary and prices listed in this brochure are as of publication date and are subject to change. Under normal conditions the total expedition price is guaranteed at the time of booking. However, the expedition pricing is determined far in advance of initial departure on the basis of then-existing projections of fuel and other costs. In the event of increases in those costs, including but not limited to increases in the price of fuel, currency fluctuations, increases in government taxes or levies, or increased security costs, the right is reserved to adjust the price of your expedition or add a surcharge to cover such unexpected increases. We will always provide an explanation of the reason for increase in costs.

PHOTO CREDITS: Marc Cappelletti, Eric Guth, Justin Hoffman, Ralph Lee Hopkins, Michael S. Nolan, Jeff Litton, Ryder Redfield, Rich Reid, Max Seigal, Shutterstock, David Spiegel, David Vargas

CANCELLATION POLICY	
Number of Days Prior to Expedition Start	Per Person Cancellation Fee
120 or more days	\$350
119-90 days	Advance payment cost
89-60 days	25% of trip cost
59-45 days	50% of trip cost
44-0 days	No refund

This policy applies to the voyage only. We strongly recommend that you purchase a travel protection plan.



Please send reservation to:
 Princeton Journeys
 Princeton University
 P.O. Box 5256
 Princeton, NJ 08543
 Phone: 609-258-8686
 Fax: 609-258-5561
 Email: journeys@princeton.edu

RESERVATION FORM: EXPLORING ALASKA'S COASTAL WILDERNESS

8 DAYS / 7 NIGHTS | AUGUST 12-19, 2023
 ABOARD NATIONAL GEOGRAPHIC VENTURE

Please reserve _____ place(s).

Name 1: _____
(As it appears on I.D.)

Name 1: _____ Princeton Affiliation: _____
(Preferred name for name badge)

Name 2: _____
(As it appears on I.D.)

Name 2: _____ Princeton Affiliation: _____
(Preferred name for name badge)

Street Address: _____

City: _____ State: _____ Zip: _____

Home Phone: _____ Business Phone: _____

Cell Phone: _____ Fax: _____

Email: _____

Accommodations: Double Single Twin share w/friend
 Share with roommate assigned by tour operator

Please indicate choice of cabin category in order of preference

1st choice: _____ 2nd choice: _____

Advance Payment Information: US\$750 per person.

If paying by check, please make payable to: **Lindblad Expeditions.**

Enclosed is my advance payment of \$ _____

If paying by credit card, we will contact you to finalize your booking and collect payment information.

Princeton University is pleased to facilitate travel opportunities for its Alumni and Friends through Princeton Journeys. Princeton Journeys works with tour operators to make available interesting and enriching travel opportunities for the Princeton family. Please note that neither the University nor Princeton Journeys conducts tours, nor does either act as an agent for guests interested in tours. Princeton Journeys acts as a facilitator with tour operators, and tour participants contract directly with tour operators to make arrangements for completing travel. Princeton Journeys encourages you to familiarize yourself thoroughly with the tour operator's cancellation and refund policies, and also to investigate available services such as trip cancellation insurance. Neither the University nor Princeton Journeys is responsible for changes to trips or travel arrangements or for losses or additional expenses resulting from or relating to travel. **Princeton Journeys' complete terms, which you are required to agree to before enrolling in a tour, can be found at: alumni.princeton.edu/connect/princeton-journeys/terms-and-conditions.**

EXPLORING ALASKA'S COASTAL WILDERNESS

EXPEDITION HIGHLIGHTS

- » Kayak into protected coves and look for sea otters, seabirds, and harbor seals.
- » Hike through lush forests to cascading waterfalls, and cruise on a Zodiac along shorelines to search for bears.
- » By special permit—sail the expanse of glaciers, witness icebergs calving, and search for wildlife in Glacier Bay National Park.
- » Whale-watch daily from the bow to spot breaching humpbacks and orcas on the hunt.
- » Discover Alaska's seldom-seen, vibrant marine life revealed by an undersea specialist.

100% CARBON NEUTRAL AND COMMITMENT TO BEING SINGLE-USE PLASTIC-FREE

We have chosen Lindblad Expeditions because they care deeply about the planet and see travel as a powerful force for good.

 Printed on 100% recycled content paper with soy-based inks. We recommend that you pass this along for others to enjoy or recycle.



PRINCETON JOURNEYS

Princeton Journeys
Princeton University
P.O. Box 5256
Princeton, NJ 08543

PRSR STD
U.S. POSTAGE
PAID
LINDBLAD
EXPEDITIONS

GRP-PRI-ALAS23